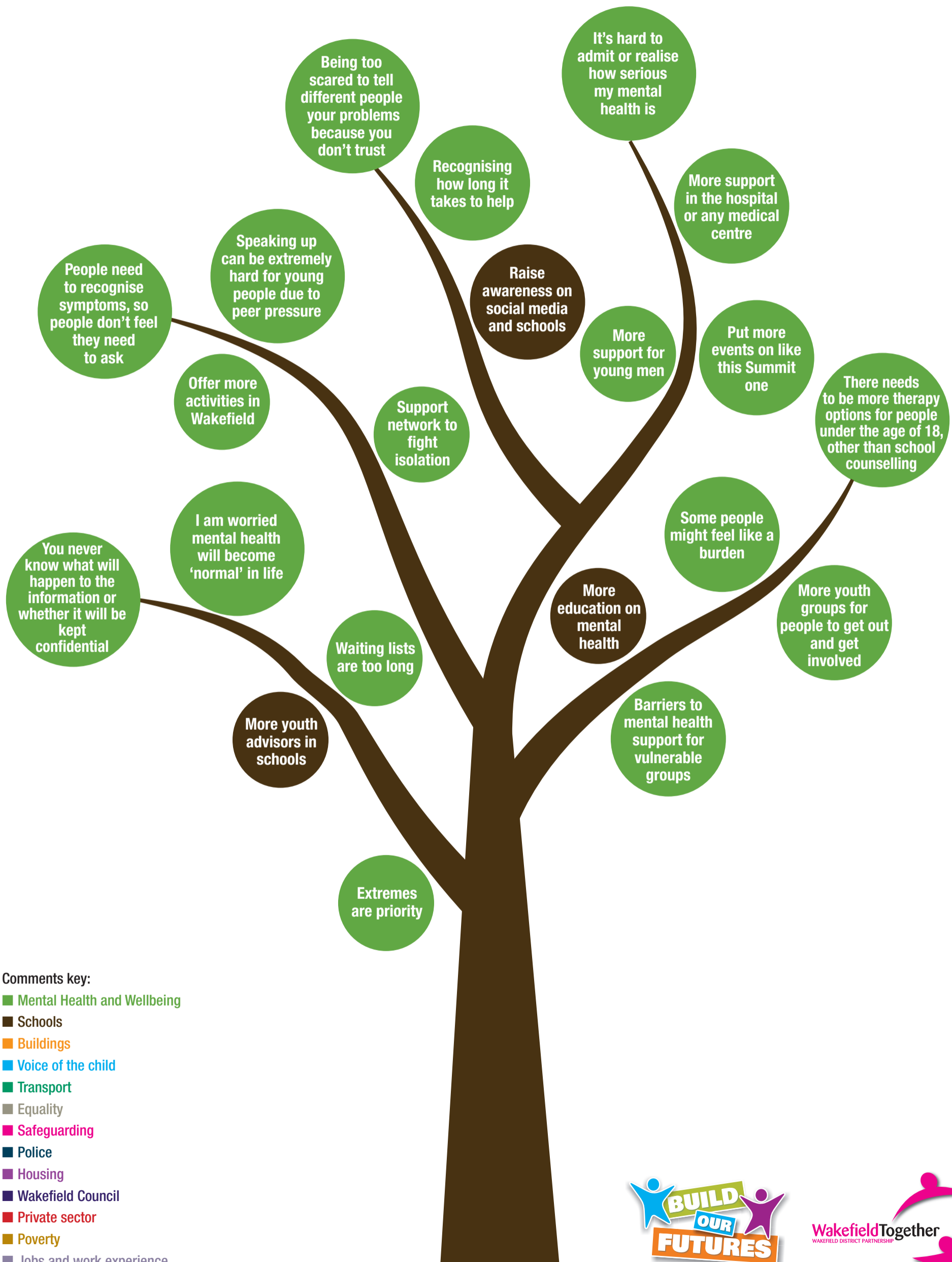
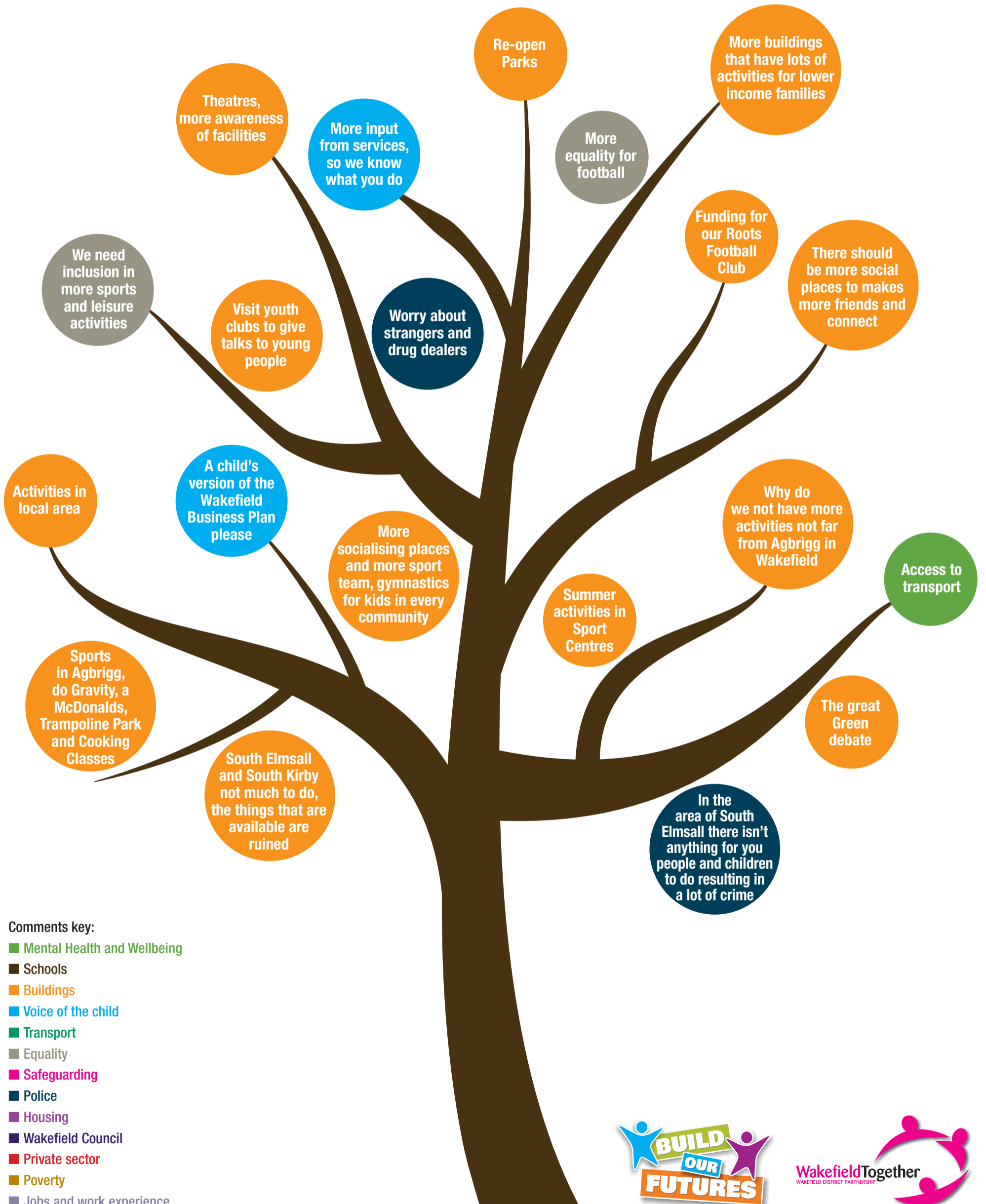


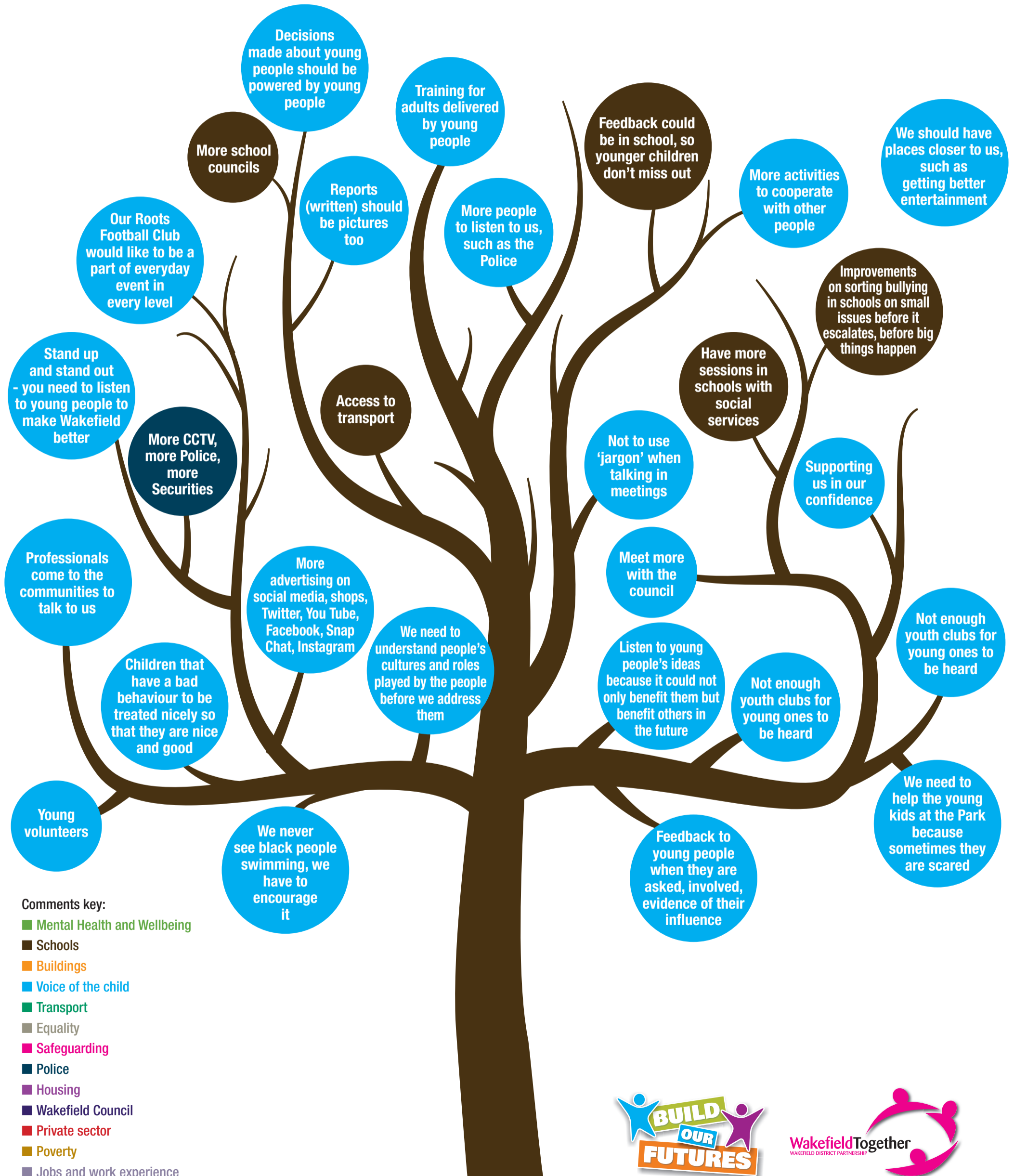
Mental Health and Wellbeing Support



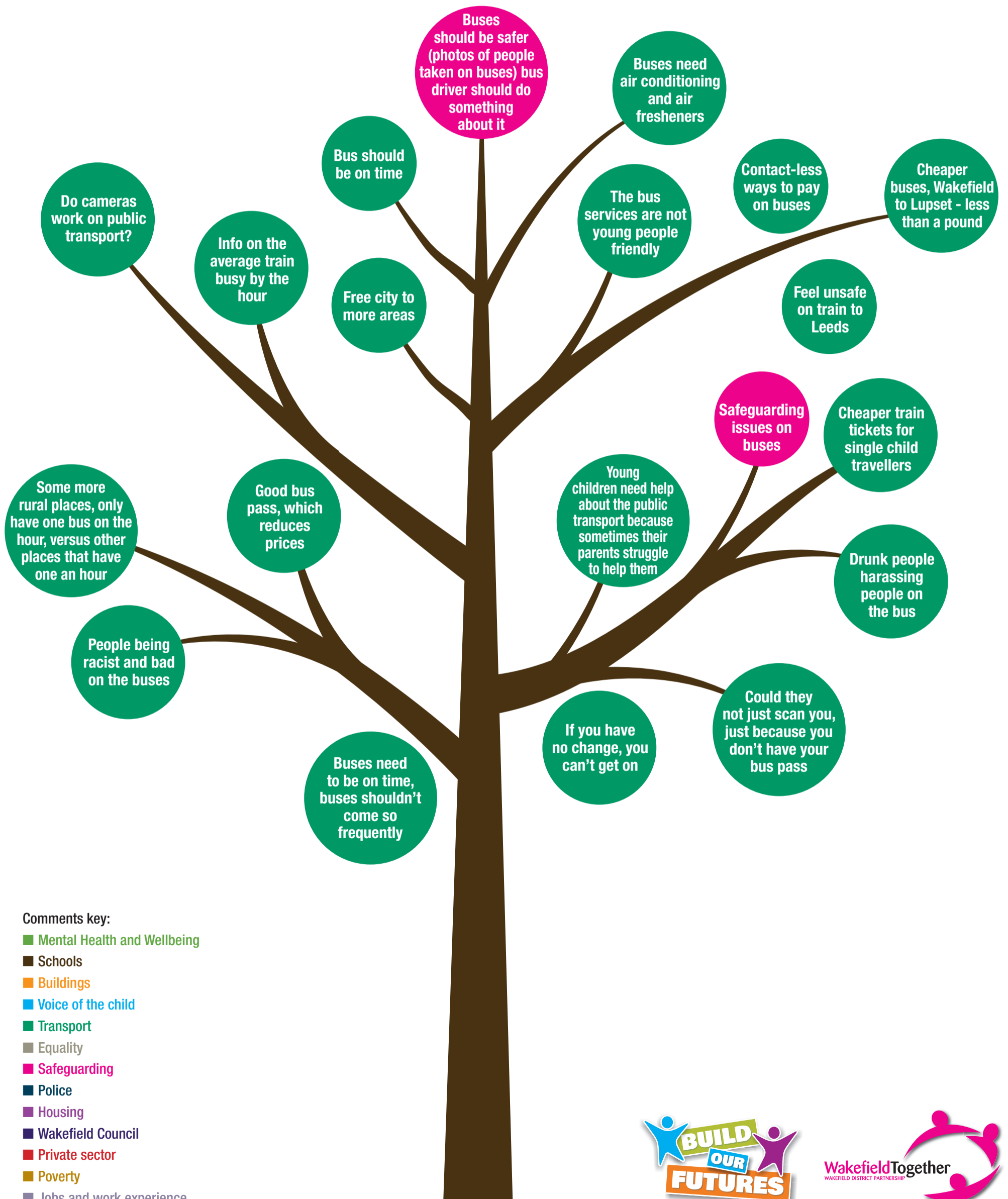
Our buildings, places to go, social leisure and the arts



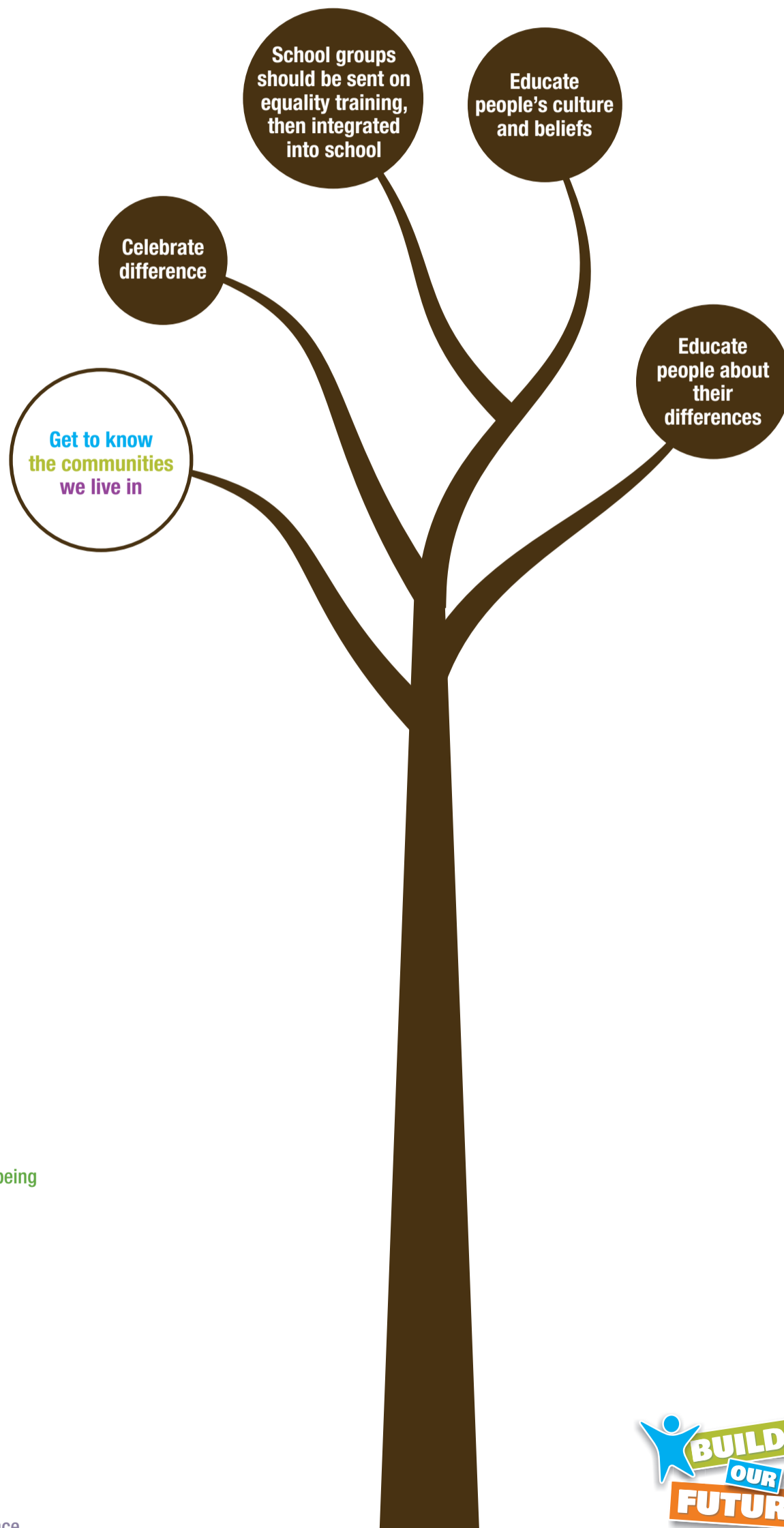
Voice and influence of children and young people



Access to transport



Being included, celebration difference and recognising equality in work

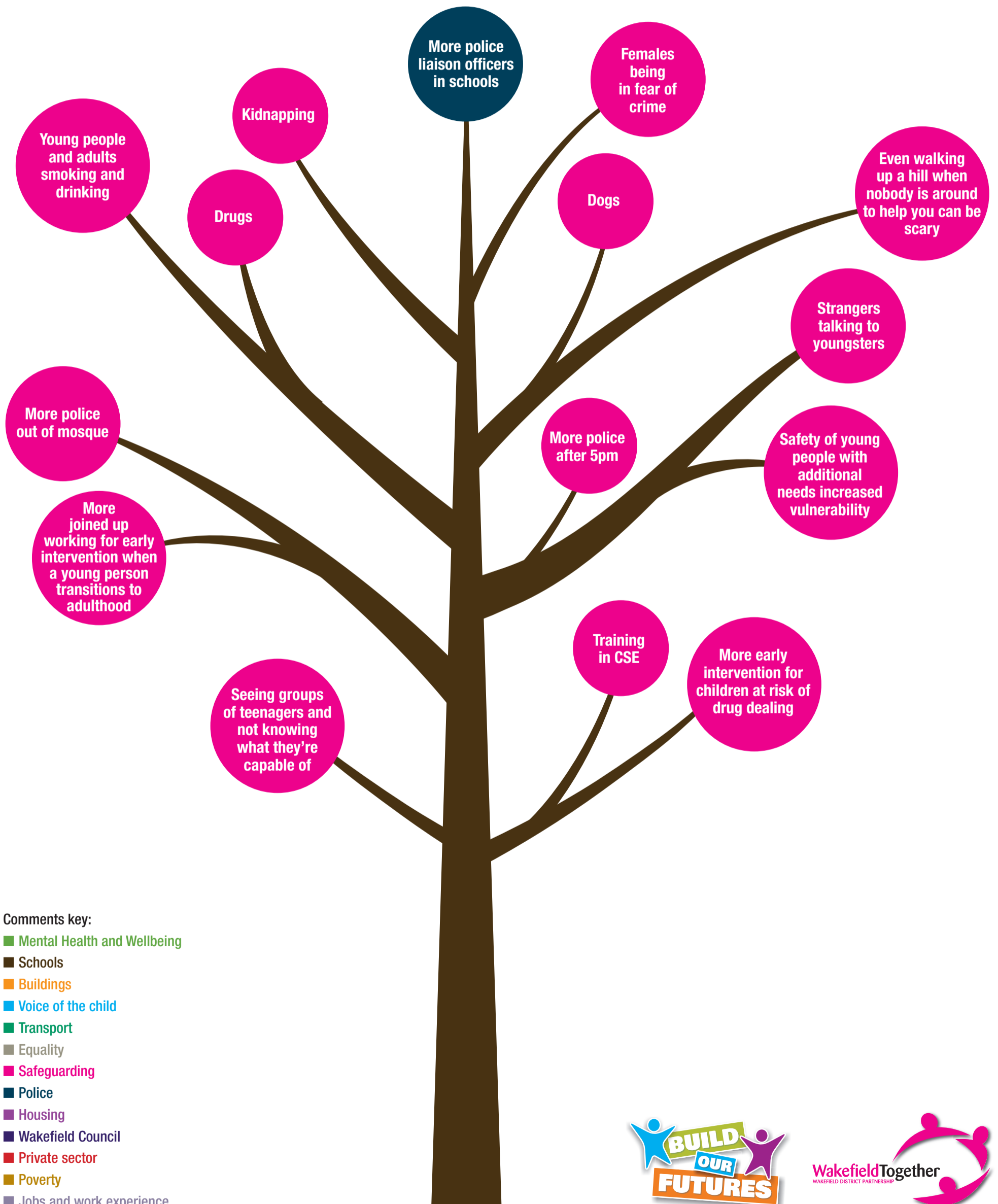


Comments key:

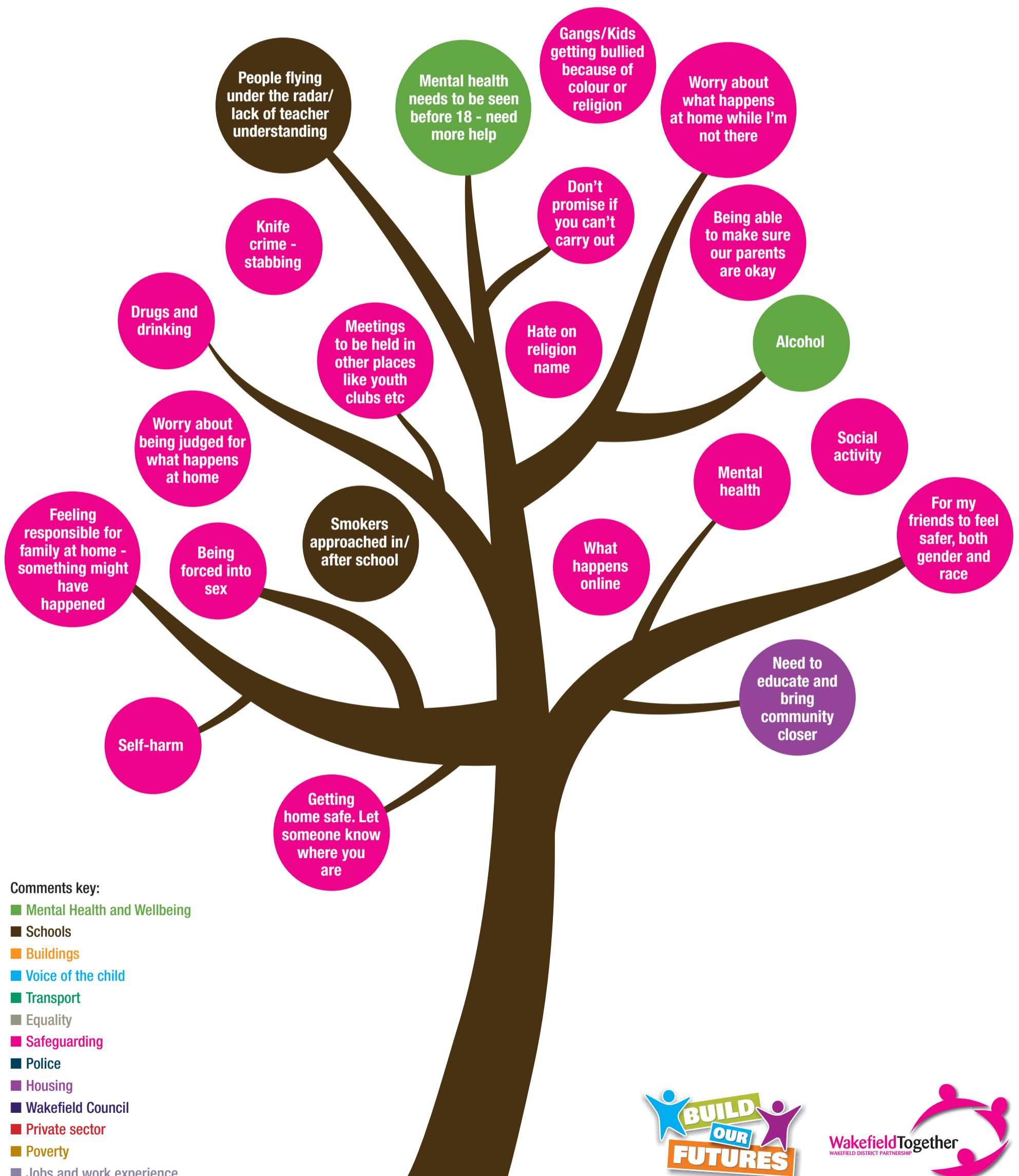
- Mental Health and Wellbeing
- Schools
- Buildings
- Voice of the child
- Transport
- Equality
- Safeguarding
- Police
- Housing
- Wakefield Council
- Private sector
- Poverty
- Jobs and work experience



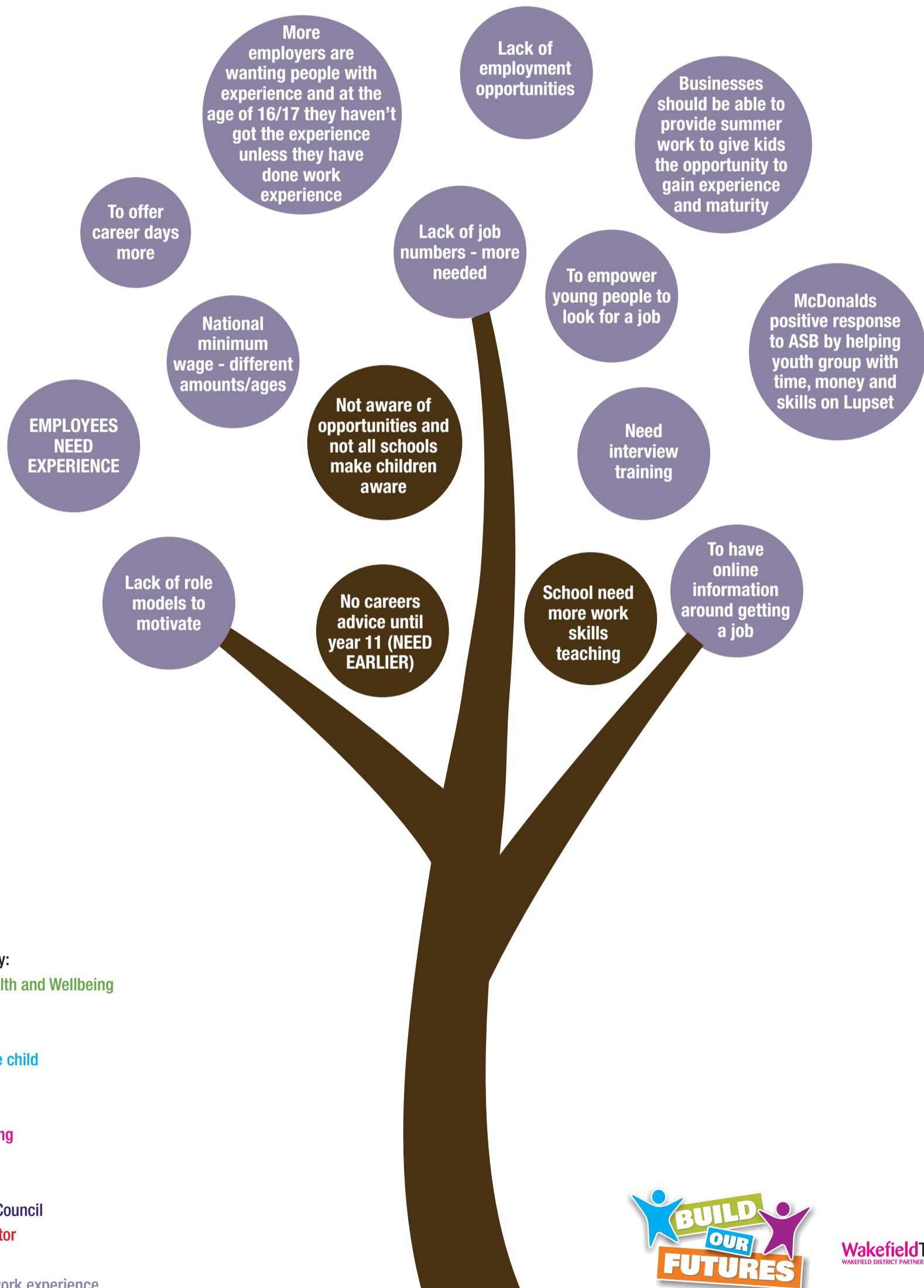
Feeling safe on the streets



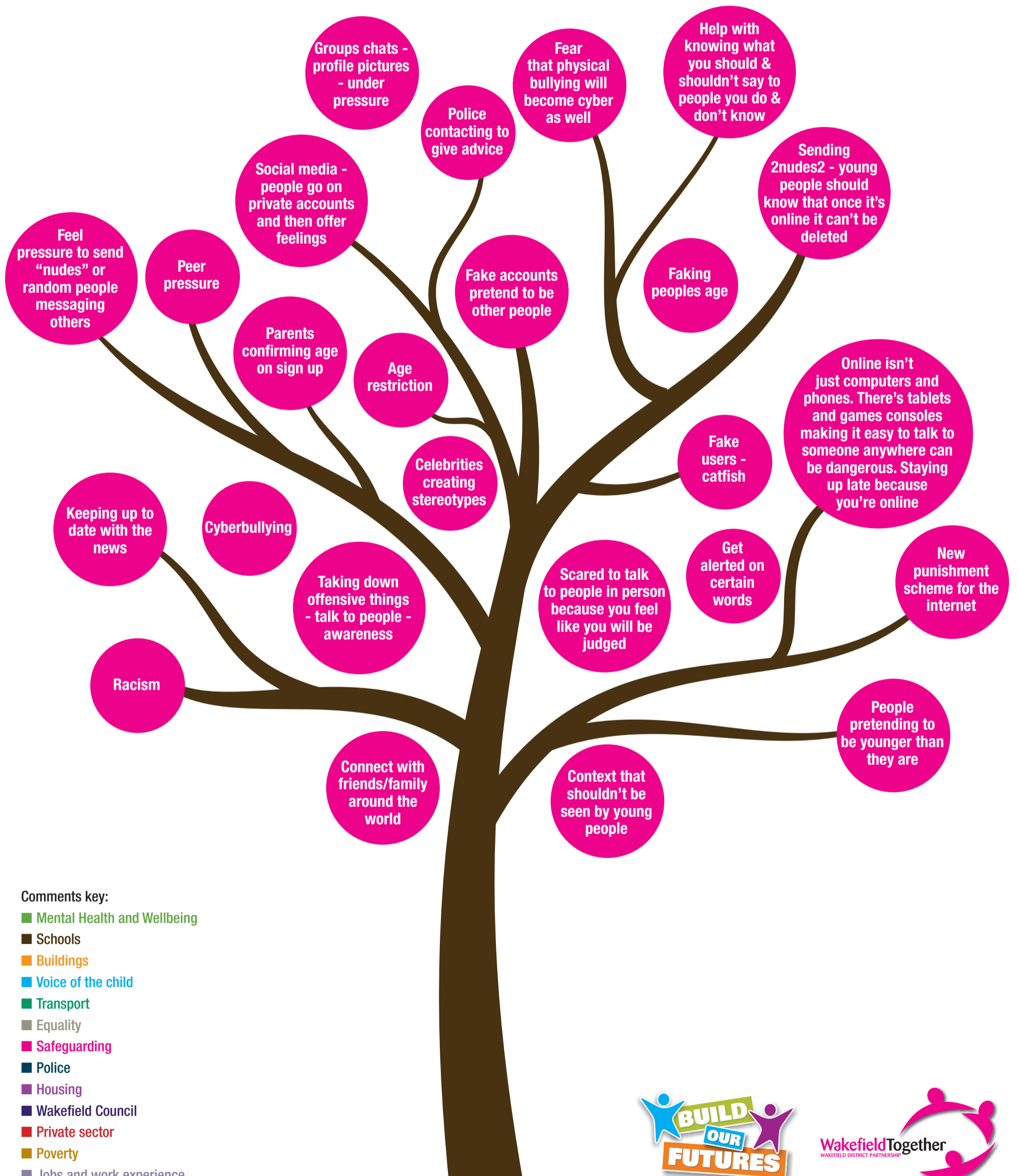
Wakefield's safeguarding charter - keeping young people safe



Working with the private sector for the benefit of children and young people



Feeling safe online

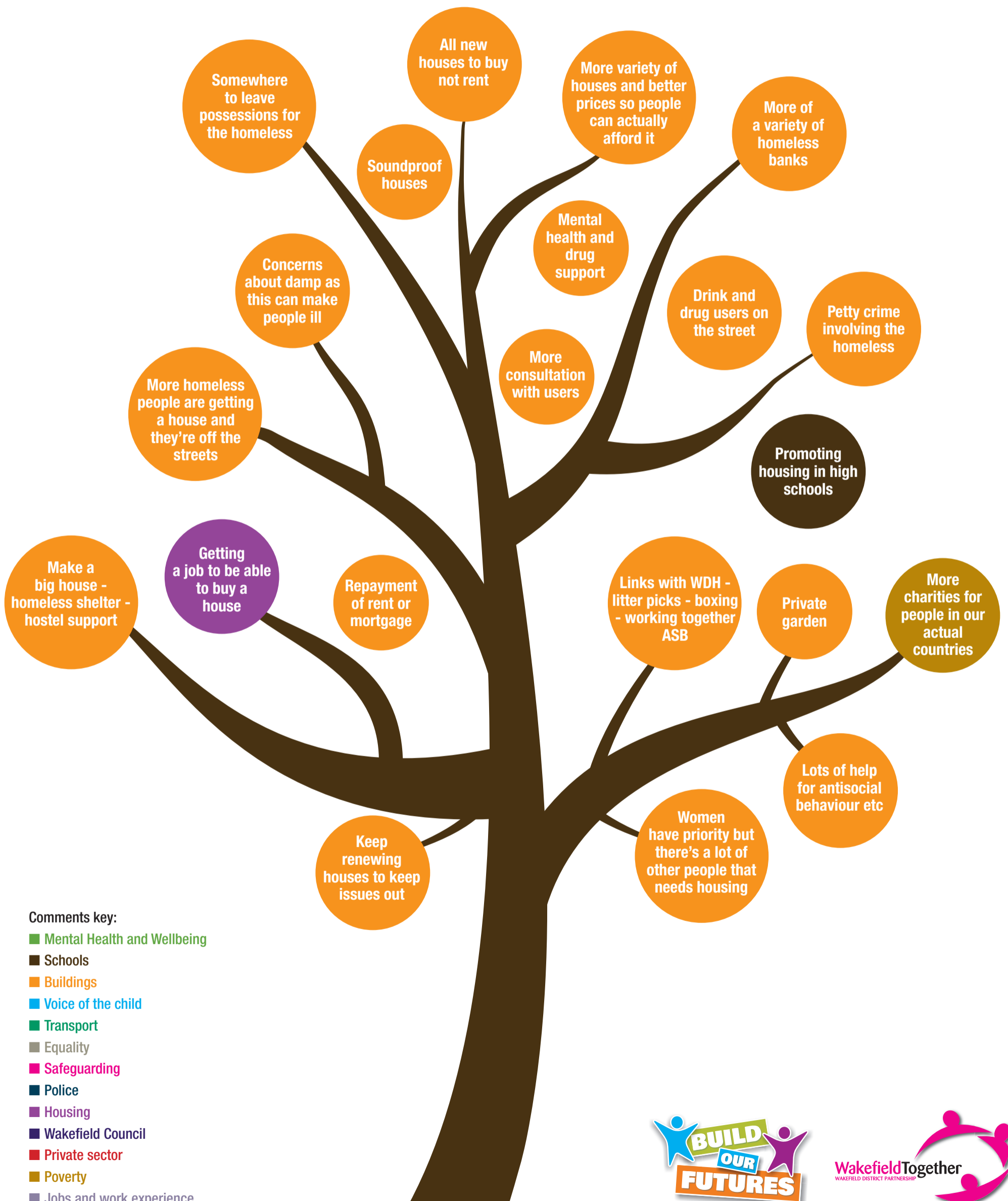


Comments key:

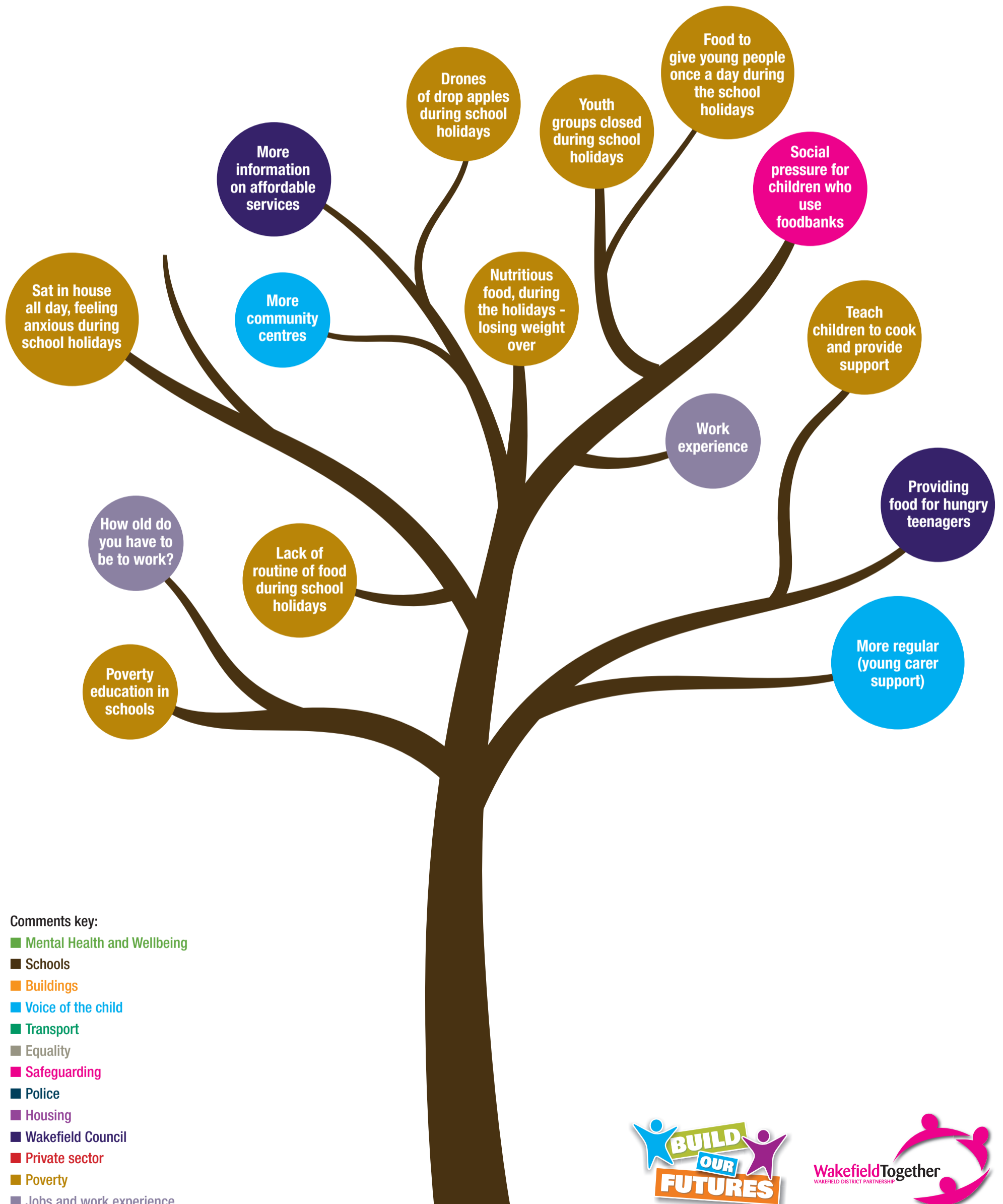
- Mental Health and Wellbeing
- Schools
- Buildings
- Voice of the child
- Transport
- Equality
- Safeguarding
- Police
- Housing
- Wakefield Council
- Private sector
- Poverty
- Jobs and work experience



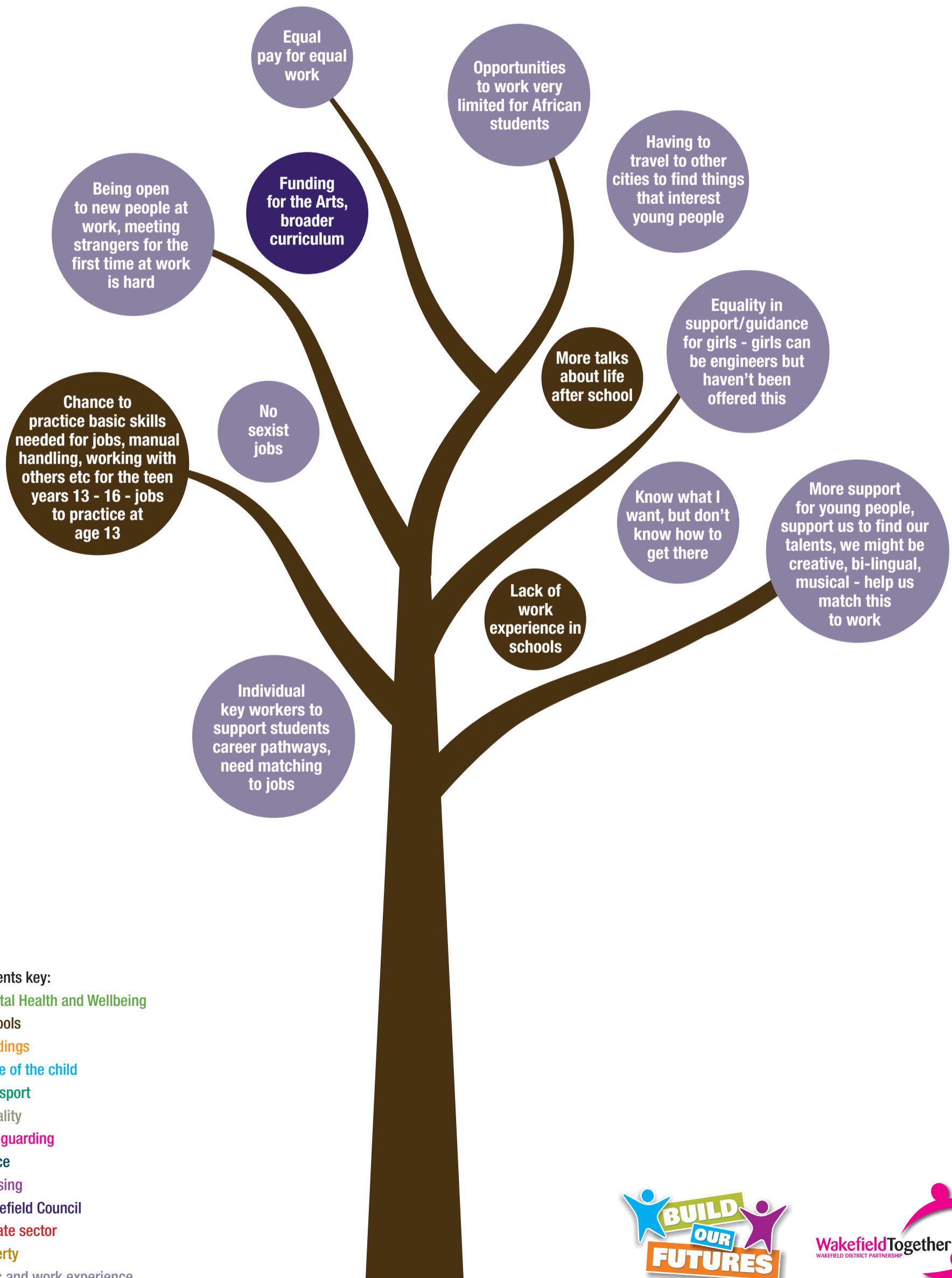
Housing and homelessness



Poverty, food and safe places to go in the school holidays



Jobs, work experience and education



Comments key:

- Mental Health and Wellbeing
- Schools
- Buildings
- Voice of the child
- Transport
- Equality
- Safeguarding
- Police
- Housing
- Wakefield Council
- Private sector
- Poverty
- Jobs and work experience

